



Star

NURTURING TODAY'S **YOUNG PEOPLE**,
INSPIRING TOMORROW'S **LEADERS**

UNIFORM POLICY - BOYS

Faith schools only





Document control

This document has been approved for operation within:	Tauheedul Islam Boys' High School Eden Boys' School, Bolton Eden Boys' School, Preston Eden Boys' School, Birmingham
Date of last review	August 2018
Date of next review	August 2020
Review period	2 Years
Status	Trust Requirement
Owner	Star Academies
Version	4



Contents

Introduction	4
Aims	4
Who is responsible for this policy?	4
Uniform guide	4
Personal appearance	5
School bag/pencil case/stationery bag	5
Banned items	5
Financial support.....	6
Breaches of uniform code.....	6
Monitoring, evaluation and review	6
Appendix 1: Main uniform / sportswear.....	7



Introduction

1. The School promotes excellence in everything its pupils undertake. The uniform and appearance of our pupils will support the ethos of our School; providing the pupils with pride to be part of the School and enabling them to act as ambassadors for the School.
2. High standards of presentation are required at all times when wearing the school uniform. Whenever the school uniform is worn, it must be complete and not mixed with non-uniform clothing. This includes when travelling to and from school.

Aims

3. To set out the School's guidelines for uniform.
4. To support the mission, vision and values of the Trust and its establishments.

Who is responsible for this policy?

5. This policy only applies to Trust schools with an Islamic Faith designation.
6. The Trust has overall responsibility for the effective operation of this policy and for ensuring compliance with the relevant statutory or Trust framework. The Trust has delegated day-to-day responsibility for operating the policy to the Trust Central Team, Local Governing Body and Principal of each Trust Boys' school with an Islamic faith designation.
7. The Local Governing Body and Senior Leadership Team at each Trust Boys' school with an Islamic faith designation has a specific responsibility to ensure the fair application of this policy and all members of staff are responsible for supporting colleagues and ensuring its success.

Uniform guide

8. The items listed below are compulsory for all pupils (unless otherwise indicated). Items marked with an *asterisk should be purchased from Star Academies approved uniform stockists. Other items can be bought at a variety of retailers.
9. A different dress code may be required for school events. Such variations for all non-uniform events will be clearly specified and communicated to parents and pupils.

Main Uniform – Option A
* Navy Blue Pinstripe Jacket - <i>Suit Jackets may only be removed in lessons with the permission of the teacher.</i>
* Navy Blue Pinstripe Trousers
* Navy Blue V-Neck Knitted Jumper –with Badged School Logo (<i>Optional</i>)
* Pale Blue Long Sleeve Shirt with White Button Down Collar - <i>The shirt must be worn tucked in. The top shirt button must be fastened.</i>
Plain Black or Navy Socks
Plain Black Formal Leather Flat Shoes - <i>No trainers, no boots, no suede shoes and no patent leather shoes.</i>
Black / Grey or Navy Smart Coat or Jacket - <i>No large logos or patterns, no denim or leather.</i>
* Black School Bag with School Logo (<i>Optional</i>)



Main Uniform – Option B
* Navy Blue Pinstripe Jacket - <i>Suit Jackets may only be removed in lessons with the permission of the teacher.</i>
* Navy Blue Pinstripe Trousers
* Navy Blue V-Neck Knitted Jumper – with Badged School Logo (<i>Optional</i>)
White Thobe (Jabba) and White Topi
Plain Black or Navy Socks
Plain Black Formal Leather Flat Shoes - <i>No trainers, no boots, no suede shoes and no patent leather shoes.</i>
Black / Grey or Navy Smart Coat or Jacket - <i>No large logos or patterns, no denim or leather.</i>
* Black School Bag with School Logo (<i>Optional</i>)

Sportswear
* Tracksuit Jacket (<i>Optional</i>)
* Tracksuit Long Trousers
* Fully-reversible Games Long Sleeve Shirt
* Short Sleeve Polo Shirt
* Sport Shorts
* Navy under-shorts (below knee) (<i>Optional</i>)
* Navy Knee Length Football Socks
White Sports Socks
* Sports Bag with School Logo (<i>Optional</i>)
Training Shoes

Personal appearance

10. Long nails, nail varnish and make-up are prohibited.
11. No jewellery other than a wristwatch may be worn (unless otherwise agreed on grounds of faith).
12. Hair must be kept tidy. Extremes of length or style are not permitted (unless otherwise agreed on grounds of faith).

School bag/pencil case/stationery bag

13. School bags, pencil cases or stationery bags must not display offensive or political images or slogans.

Banned items

14. Mobile Phones, MP3 Players, iPods and electronic gaming equipment must not be brought into school.



Financial support

15. Families which are experiencing genuine hardship and require support to purchase the uniform may meet with the Principal to discuss.

Breaches of uniform code

16. Uniforms will be checked on a daily basis to ensure they conform to our policy and that pupils look smart and well presented. In the event that a pupil has the wrong uniform, the teacher or member of staff will challenge the pupil and instruct them to address the issue.
17. For significant and repeated breaches of the uniform code, the matter will be referred and the pupil may be sent home to address the concern before returning to school.
18. If a prohibited or offensive item (such as an offensive image or slogan on stationery) is brought into school, the item will be confiscated.

Monitoring, evaluation and review

19. The policy will be promoted and implemented throughout all Trust Boys' schools with an Islamic faith designation.
20. The Trust will monitor the operation and effectiveness of arrangements referred to in this policy at each Trust Boys' school with an Islamic faith designation.
21. The Trust will review this policy every two years in consultation with each Trust Boys' school with an Islamic faith designation.



Appendix 1: Main uniform / sportswear



Option B

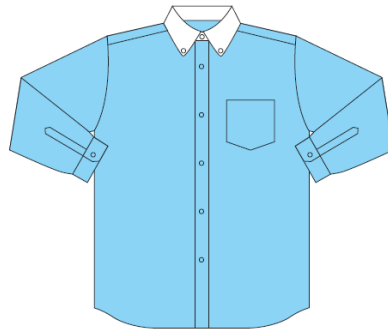
White Thobe (Jabba)



Option A Pale Blue Long Sleeve Shirt



With Badged School Logo



Boys Polo and Track Pant



Boys Reversible Sports Top



(Reverse Side)



Track Top and Pant

Above garments are in Navy with Grey panels (where applicable) and Sky Piping